

**CITY OF COWETA 2018 ROW MAINTENANCE QUOTE**

The City of Coweta is accepting quotes for mowing State Highway 51 Right of Ways (ROW) until April 5, 2018 at 10:00 a.m. Quotes should be submitted in a sealed envelope to: City of Coweta, 310 South Broadway, Coweta, OK 74429, ATTN: City Clerk, and marked on the outside as follows: CITY OF COWETA 2018 ROW MOWING QUOTE. Information for contractors may be obtained by contacting the Coweta Public Works Authority at (918)486-8073, quote packets can be obtained at Coweta City Hall or on the City’s website www.cityofcoweta-ok.gov.

State Highway 51 ROW mowing has specific locations and requirements (appendix a). The contractor will supply their own equipment and supplies needed for maintenance. Contractor must provide proof of liability insurance and workers compensation insurance for employees before a contract will be signed. The Coweta Public Works Director will meet with the successful contractor, if needed, to review the general specifications for ROW mowing and to determine the start date.

**LOCATION**

**HWY 51E**

**Bi-Weekly**

From 305<sup>th</sup> E Ave and Hwy 51 east to the Muskogee turnpike, mowing the north and south side of Highway 51

**Quote: \$**\_\_\_\_\_

**HWY 51N**

**Bi-Weekly**

From 141<sup>st</sup> St S to the North City limit sign, mow the west side of Highway 51

**Quote: \$**\_\_\_\_\_

**Total Quote: \$**\_\_\_\_\_

**CITY OF COWETA 2018 ROW MAINTENANCE QUOTE**

**List all pieces of equipment and supplies contractor has available to be used for maintenance:**

---

---

---

**Company / Contractor:** \_\_\_\_\_ **(Print)**

**Contact person:** \_\_\_\_\_

**Address:** \_\_\_\_\_

**Phone:** \_\_\_\_\_ **Alternate Number** \_\_\_\_\_

**Signature of Owner / Representative:** \_\_\_\_\_

**Date:** \_\_\_\_\_



ave of Donald Paul Sloat

N4160 Rd

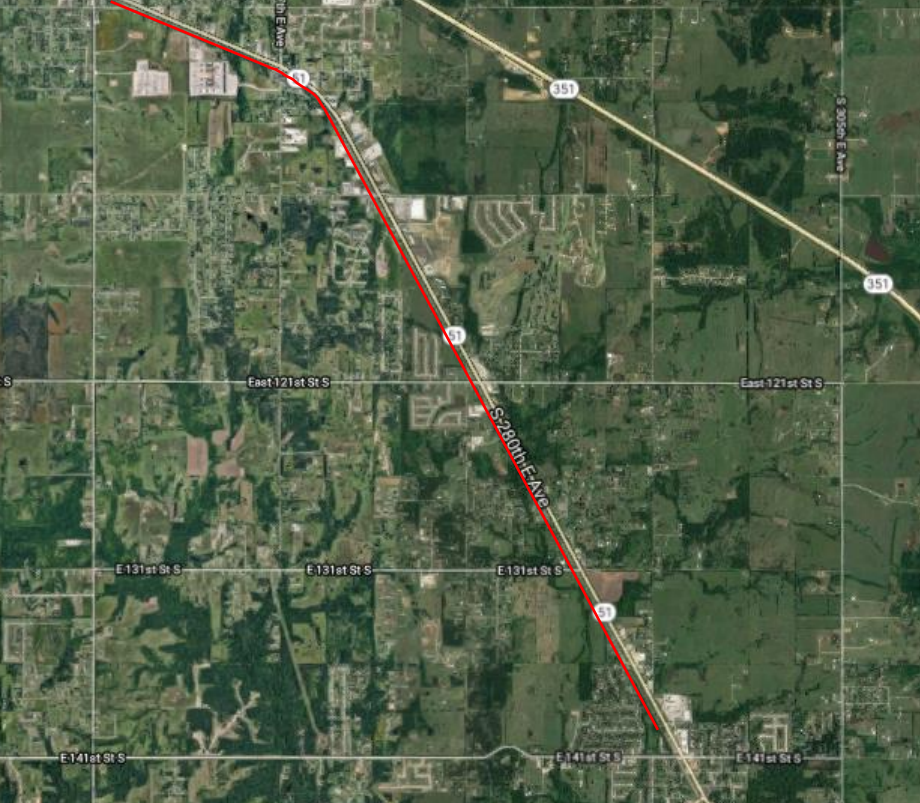
51

51

51

51

351



10th E Ave

7

351

S 305th E Ave

351

East 121st St S

East 121st St S

S 280th E Ave

E 131st St S

E 131st St S

E 131st St S

7

E 141st St S

E 141st St S

E 141st St S